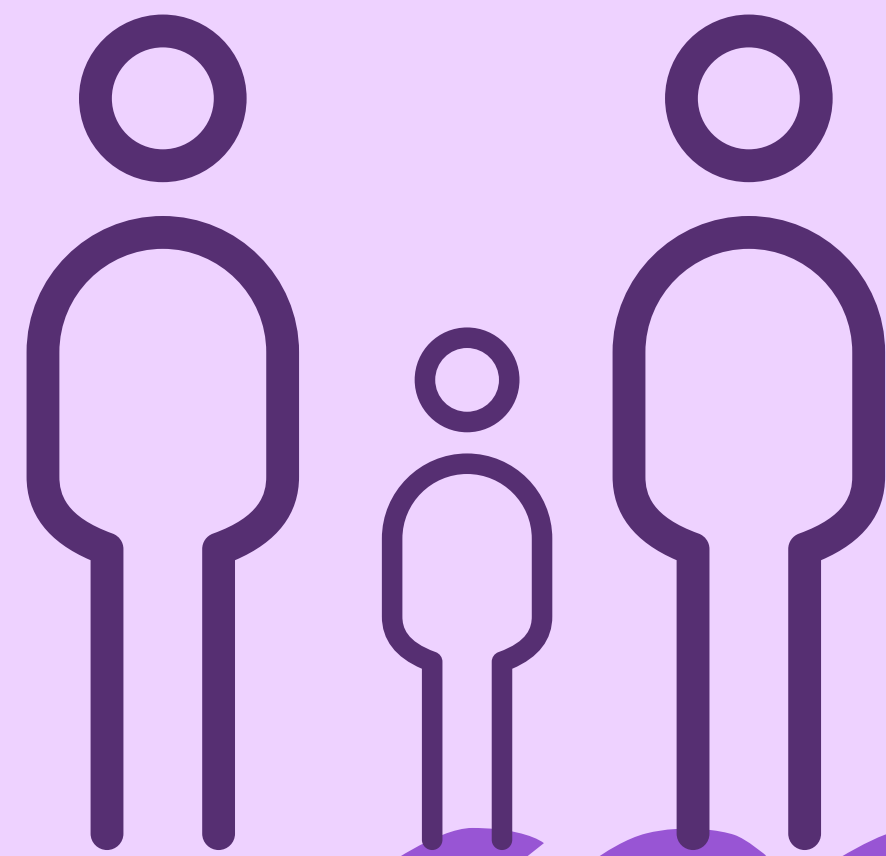




Data Driven Care Coordination

Snapshot of social challenges



Changing Demographics

- 10,000 people turning 65 every day³
- Long-term care population of 12,000 projected to double by 2050³

Homelessness

- 578,000+ sleep outside, in a shelter or transitional housing⁴

Substance Abuse

- \$700 billion: total annual cost associated with tobacco, alcohol and illicit drugs⁶
- In 2013, 9.4% of population used an illicit drug in past month, up from 8.3% in 2002⁶

¹ <http://www.cbpp.org/research/policy-basics-where-do-our-federal-tax-dollars-go>

² OECD

³ Kaye H, Harrington C, LaPlante M. "Long-Term Care: Who Gets It, Who Provides It, Who Pays, And How Much?" Health Affairs. January 2010; 29(1):11-21.

⁴ http://www.endhomelessness.org/page/-/files/State_of_Homelessness_2015_FINAL_online.pdf

Snapshot of social challenges

Poverty

- 16.1% for the population as a whole⁵
- 25.7% for African-American households⁵
- 28% for Hispanic households⁵

Healthcare Spending

- Healthcare, social security, and social program spending accounts for nearly 60% of U.S. federal spending.¹
- Health spending accounts for more than 11% of federal spending in France and Germany and 12% in the Netherlands.²



⁵http://www.census.gov/hhes/povmeas/methodology/supplemental/research/Short_ResearchSPM2011.pdf

⁶<http://www.drugabuse.gov/related-topics/trends-statistics>

Improve Outcomes with Coordinated Care

Identify

the social determinants of health.

Assess

the individual's needs utilizing analytics.

Respond

with treatments and interventions that will optimize outcomes.

Manage

care plan through a single view of the citizen.

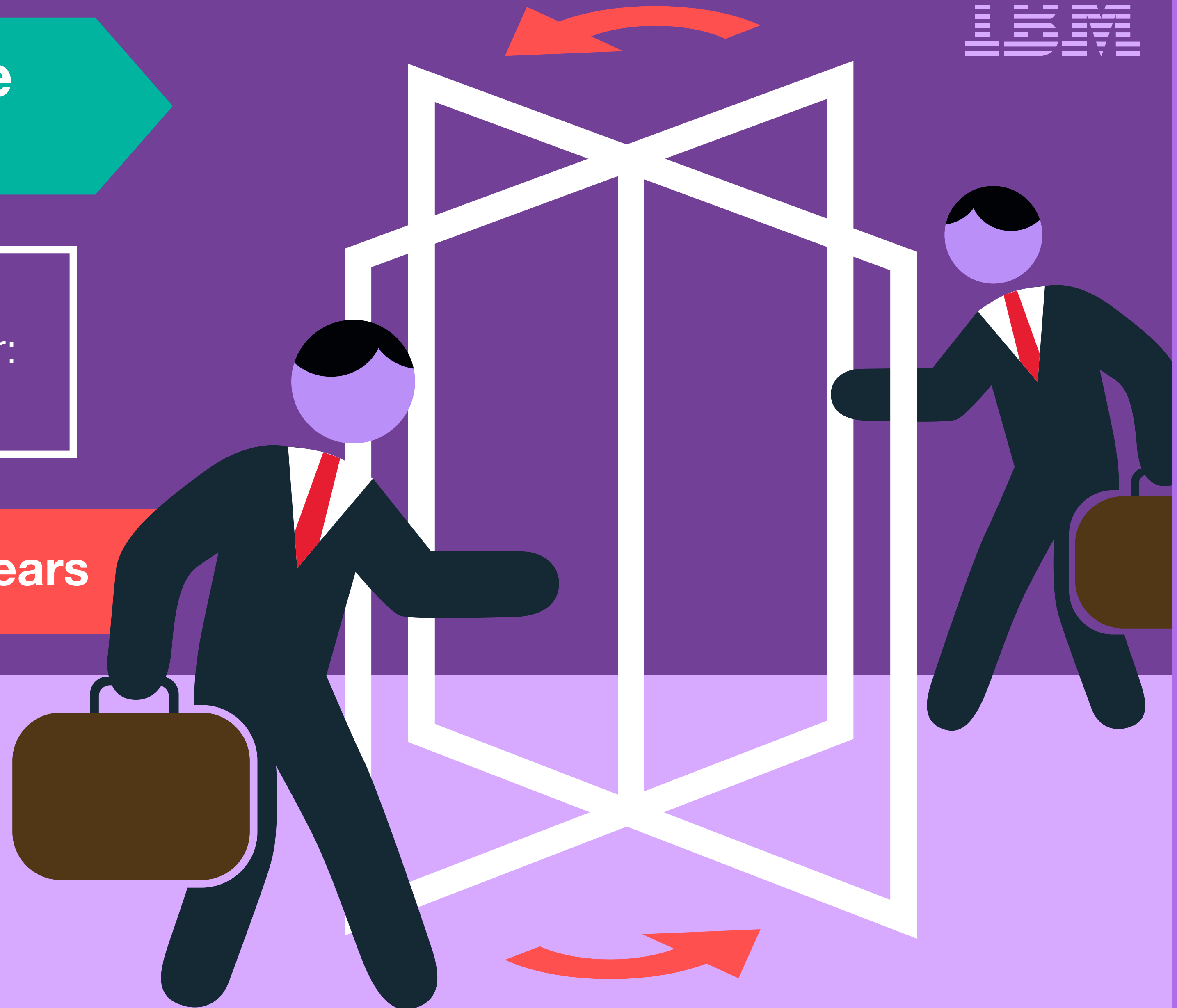
Measure

outcomes to reassess treatment options and enhance analytic insights.

System inefficiencies create frustration for caseworkers

- Government Accountability Office estimate of child welfare staff turnover: 30 to 40% annually

Average tenure: less than two years





Social program leaders must enable digital agendas to optimize outcomes

Digital strategy to streamline and align services

- Enable efficient sharing of resources and information among formerly siloed systems
- Power a new framework for rapid creation of applications and sharing of modules as reusable blocks of code and data
- Create a 360-degree view of individuals to understand and serve within broad context of their lives
- Establish cloud base to optimize efficiency and cost effectiveness
- Collaborate to develop plans that improve outcomes



See How

data-driven approaches are enabling social program agencies to make a difference for the citizens they serve